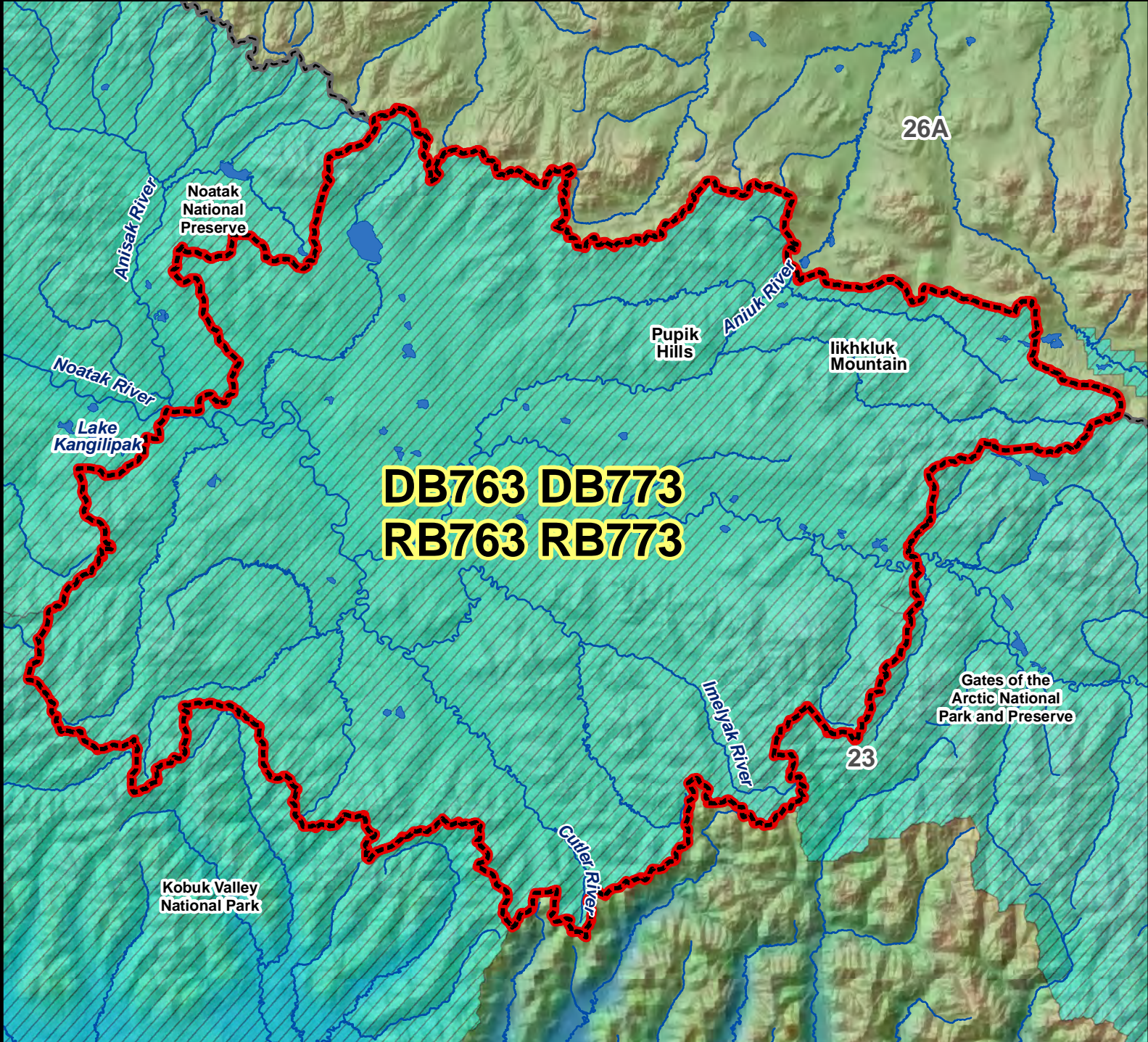


DB763 DB773 RB763 RB773 Brown Bear Drawing & Registration Permit Hunt

This map is intended for hunt planning use, not for determining legal property or regulatory boundaries. Content is compiled from various sources and is subject to change without notice. See current hunting regulations for written descriptions of boundaries. Hunters are responsible for knowing the land ownership and regulations of the areas they intend to hunt.



AREA DESCRIPTION: Unit 23, that portion of the Noatak River drainage upstream of and excluding the Anisak River, upstream and east of Lake Kangilipak, and excluding Gates of the Arctic National Park. This area includes: Aniuik River, Cutler River, Ikkhkluk Mountain, Imelyak River, Upper Noatak River, Pupik Hills.

